

AGENDA

**UNIVERSITY OF SOUTHERN INDIANA
BOARD OF TRUSTEES**

January 13, 2005

SECTION I - GENERAL AND ACADEMIC MATTERS

- A. APPROVAL OF MINUTES OF NOVEMBER 4, 2004, MEETING**
- B. ESTABLISHMENT OF NEXT MEETING DATE, TIME, LOCATION**
- C. REPORT OF THE LONG-RANGE PLANNING COMMITTEE**
- D. PRESIDENT'S REPORT**
- E. REPORT ON THE INDIANA GENERAL ASSEMBLY**
- F. APPROVAL OF CODE OF ETHICS FOR BOARD OF TRUSTEES**
- G. APPROVAL OF CONFLICT OF INTEREST STATEMENTS**
- H. APPROVAL OF REQUEST FOR PUBLIC UTILITY EASEMENT**
- I. APPROVAL OF NEW SITE AND DELIVERY MODE FOR THE MASTER OF SOCIAL WORK PROGRAM**
- J. APPROVAL OF CHANGE IN DESIGNATION OF THE FIVE ACADEMIC SCHOOLS**

SECTION II – FINANCIAL MATTERS

- A. REPORT OF THE FINANCE/AUDIT COMMITTEE**
- B. REPORT OF THE CONSTRUCTION COMMITTEE**
- C. UPDATE ON CURRENT CONSTRUCTION PROJECTS**
- D. APPROVAL OF REQUEST FOR CONSTRUCTION OF THE KENNETH P. McCUTCHAN ART GALLERY**

SECTION III – PERSONNEL MATTERS

- A. APPROVAL OF PERSONNEL ACTIONS**

SUPPLEMENTAL INFORMATION
UNIVERSITY OF SOUTHERN INDIANA
BOARD OF TRUSTEES

January 13, 2005

SECTION I - GENERAL AND ACADEMIC MATTERS

A. APPROVAL OF MINUTES OF NOVEMBER 4, 2004, MEETING

B. ESTABLISHMENT OF NEXT MEETING DATE, TIME, LOCATION

C. REPORT OF THE LONG-RANGE PLANNING COMMITTEE

The Long-Range Planning Committee will meet prior to the Board of Trustees meeting on January 13, 2005. A report will be presented.

D. PRESIDENT'S REPORT

E. REPORT ON THE INDIANA GENERAL ASSEMBLY

A report will be presented on the 2005 session of the Indiana General Assembly, including the initial budget recommendation from the Commission for Higher Education compared to USI's approved budget request (Exhibit I-A).

F. APPROVAL OF CODE OF ETHICS FOR BOARD OF TRUSTEES

At its January 8, 2004, meeting, the Board of Trustees approved a Code of Ethics for University administrators, faculty, and support staff in voluntary compliance with the Sarbanes-Oxley Act. Upon the recommendation of the Finance/Audit Committee, approval of the Code of Ethics for the Board of Trustees in Exhibit I-B is recommended.

G. APPROVAL OF CONFLICT OF INTEREST STATEMENTS

At its meeting on November 4, 2004, the Board of Trustees reviewed the *Possible Conflict of Interest Disclosure Statements* submitted by University employees and trustees in 2004. In December 2004, for calendar year 2005, the University requested statements of all trustees and senior staff, even those with no potential conflicts of interest to disclose, and reminded all University employees of their obligation to submit a statement if required.

In 1983, the Indiana General Assembly enacted amendments to the Indiana "conflicts of interest" law, which provides that "The public servant who knowingly or intentionally: (1) has a pecuniary interest in; or (2) derives a profit from a contract or purchase connected with an action by the government entity that he serves, commits a conflict of interest, a Class D felony."

I.C. 35-41-1-2 defines "public servant" as a person who (1) is authorized to perform any official function on behalf of, and is paid by, a governmental agency; or (2) is elected or appointed to office to discharge a public duty for a governmental entity.

The 1983 amendment provides a method by which public servants can avoid the criminal aspects of the conflicts of interest law by filing a disclosure statement with the Board of Trustees. The Board of Trustees must approve such disclosures, and must forward all disclosure statements to the State Board of Accounts. A list of individuals who have submitted a *Possible Conflict of Interest Disclosure Statement* for calendar year 2004 is in Exhibit I-C.

Approval of the *Possible Conflict of Interest Disclosure Statements* in Exhibit I-C is recommended.

H. APPROVAL OF REQUEST FOR PUBLIC UTILITY EASEMENT

Vanderburgh County requests an easement for right-of-way along the east side of Schutte Road from Mahrenholz Drive to Clarke Lane. The easement will be used to install a sanitary sewer pipe for connection to the existing gravity flow sanitary sewer on Clarke Lane to serve the development at the southeast corner of Schutte Road and State Highway 62.

Approval of the Public Utility Easement in Exhibit I-D is recommended.

I. APPROVAL OF NEW SITE AND DELIVERY MODE FOR THE MASTER OF SOCIAL WORK PROGRAM

The Bower-Suhrheinrich School of Education and Human Services proposes to offer the Master of Social Work at a new site and through a distance education delivery mode. The implementation date for the program, described in Exhibit I-E, is fall 2005.

The program (part-time advanced standing track) has a distance learning focus primarily conducted off-campus. At the request of Indiana State University at Terre Haute, its campus will be utilized as an initial site for the program. This degree program is recommended by the Graduate Council, the Academic Planning Council, and the President.

Approval of a new site and delivery mode for the Master of Social Work Program (described in Exhibit I-E) is recommended.

J. APPROVAL OF CHANGE IN DESIGNATION OF THE FIVE ACADEMIC SCHOOLS

The Long-Range Planning Committee, in its meeting on November 4, 2004, discussed the possibility of re-naming the academic units colleges rather than schools to reflect the University's growth in size and complexity. The designation of an academic unit as a "school" usually denotes a narrowly focused professional program with limited degree offerings. All five academic schools at USI offer a complex array of undergraduate programs (including associate and bachelor degrees), and four of the five schools offer graduate programs. Given this complexity, the designation of "college" for the five academic schools is appropriate and offers the University greater flexibility in future organizational planning. This change is recommended by the Faculty Senate, the Academic Affairs Council, and the President.

Effective July 1, 2005, the five schools would become:

The College of Business

The College of Nursing and Health Professions

The College of Liberal Arts

The Robert H. and Elaine H. Pott College of Science and Engineering

The Bower-Suhrheinrich College of Education and Human Services

Approval of the change in designation of the five academic schools to the designation of colleges, effective July 1, 2005, is recommended.

SECTION II – FINANCIAL MATTERS

A. REPORT OF THE FINANCE/AUDIT COMMITTEE

The Finance/Audit Committee will meet prior to the Board of Trustees meeting on January 13, 2005. A report will be presented.

B. REPORT OF THE CONSTRUCTION COMMITTEE

The Finance/Audit Committee will meet prior to the Board of Trustees meeting on January 13, 2005. A report will be presented.

C. UPDATE ON CURRENT CONSTRUCTION PROJECTS

D. APPROVAL OF REQUEST FOR CONSTRUCTION OF THE KENNETH P. McCUTCHAN ART GALLERY

The construction of the Kenneth P. McCutchan Art Gallery will provide space for educational experiences in the visual arts to the USI community and the general public. The gallery will provide professional exhibition space for art majors, alumni, faculty, visiting artists, and the University's permanent collection. The art gallery will be an addition to the west side of the Liberal Arts Center at ground level facing Reflection Lake. The gallery is planned to be a one-story addition with 6,065 square feet providing space for four galleries, a work room and storage area, corridors, and a reception foyer. It is anticipated the construction will be completed during July 2006. The project cost estimate is \$1,125,000. Funding for the project will come from the Kenneth P. McCutchan Fund and other USI Foundation funds, University reserves for special projects, and the sale of art prints. A conceptual plan is shown in Exhibit II-A.

Approval of authorization for President Hoops to request approval of the Commission for Higher Education, the State Budget Committee, and the Governor of the State of Indiana for construction of the Kenneth P. McCutchan Art Gallery is recommended.

SECTION III – PERSONNEL MATTERS

A. APPROVAL OF PERSONNEL ACTIONS

Approval of the following personnel actions is recommended.

1. Early Retirement

Professor of Economics Steven R. Cox, in accordance with the early retirement policy, has requested early retirement effective December 16, 2005, including leave with pay for the period August 29, 2005 through December 16, 2005. Severance pay based on 16.5 years of service to the University will be paid as of January 31, 2006.

Professor of Sociology Howard R. Gabennesch, in accordance with the early retirement policy, has requested early retirement effective May 7, 2006, including leave with pay for the period January 3, 2006 through May 7, 2006. Severance pay based on 34 years of service to the University will be paid as of June 30, 2006.

Professor of Political Science Charles T. Barber, in accordance with the early retirement policy, has requested early retirement effective May 6, 2007, including leave with pay for the period January 2, 2007 through May 6, 2007. Severance pay based on 36 years of service to the University will be paid as of June 30, 2007.

2. Emeritus Status

It is recommended that the following faculty members be retired officially with the effective date shown and that the appropriate emeritus titles, as indicated, be conferred:

Professor Emeritus of Economics Steven R. Cox
16.5 years at USI, effective December 16, 2005

Professor Emeritus of Sociology Howard R. Gabennesch
34 years at USI, effective May 7, 2006

Professor Emeritus of Political Science Charles T. Barber
36 years at USI, effective May 6, 2007

UNIVERSITY OF SOUTHERN INDIANA
BIENNIAL BUDGET 2005-2007
OPERATING BUDGET REQUEST SUMMARY/COMPARISON

	2005-06		2006-07	
	Request	Commission for Higher Education Recommendation	Request	Commission for Higher Education Recommendation
EXPENDITURES				
Expenditure Base	65,555,478	65,555,478	72,750,284	67,891,054
Base Adjustments				
A. Enrollment Change	2,061,500	1,841,000	0	0
B. Enrollment Change Residual Amount	403,230	129,030	0	0
C. Plant Expansion	332,779	258,915	1,038,270	776,743
D. Appropriation Adjustment	1,500,000	0	0	0
E. Balance of Base Restoration	485,632	0	0	0
F. Degree Completion Incentive	0	106,631	0	0
Subtotal Base Adjustments	4,783,141	2,335,576	1,038,270	776,743
Debt Service	14,137	14,137	(3,000)	(3,000)
Reallocation of Student Fees	(14,137)	(14,137)	3,000	3,000
Subtotal Debt Service	0	0	0	0
Total Expenditure Base	70,338,619	67,891,054	73,788,554	68,667,797
Percent Change	7.30%	3.56%	1.43%	1.14%
Maintenance for Current Programs				
A. Personal Services 3% 0%*	1,462,857	0 *	1,506,744	0 *
B. Supplies & Expense 3% 0%*	439,383	0 *	452,564	0 *
C. Student Aid 3% 0%*	64,425	0 *	66,358	0 *
Subtotal Maintenance for Current Programs	1,966,665	0	2,025,666	0
Quality Improvement				
A. Center for Applied Rsrch/Economic Dev	275,000	0	250,000	0
B. Manufacturing Technology Program	0	0	125,000	0
C. Accelerated Nursing Program	170,000	0	0	0
Subtotal Quality Improvement	445,000	0	375,000	0
Total Budget Increases	7,194,806	2,335,576	3,438,936	776,743
Total Expenditure Request	72,750,284	67,891,054	76,189,220	68,667,797
Percent Change	10.98%	3.56%	4.73%	1.14%
REVENUE				
Student Fee Base	25,999,878	25,999,878	27,078,397	25,985,741
Fee Increase 3% 0%*	1,092,656	0 *	1,125,435	0 *
Transfer to Debt Service	(14,137)	(14,137)	3,000	3,000
Total Student Fees	27,078,397	25,985,741	28,206,832	25,988,741
Operating Appropriation Base	33,696,185	33,696,185	39,798,335	36,031,761
Appropriation Increase	6,102,150	2,335,576	2,313,501	776,743
Total Operating Appropriation	39,798,335	36,031,761	42,111,836	36,808,504
Fee Replacement Appropriation Base	5,859,415	5,859,415	5,873,552	5,873,552
Fee Replacement Change	14,137	14,137	(3,000)	(3,000)
Total Fee Replacement Appropriation	5,873,552	5,873,552	5,870,552	5,870,552
Total State Appropriation	45,671,887	41,905,313	47,982,388	42,679,056
Percent Change	15.46%	5.94%	5.06%	1.85%
Total Revenue Request	72,750,284	67,891,054	76,189,220	68,667,797

UNIVERSITY OF SOUTHERN INDIANA

COMPARISON OF REQUEST FOR BUDGET INCREASES
WITH INDIANA COMMISSION FOR HIGHER EDUCATION

OPERATING BUDGET	2005-06		2006-07	
	Request	Commission for Higher Education Recommendation	Request	Commission for Higher Education Recommendation
Base Adjustments				
Enrollment Change	2,061,500	1,841,000	0	0
Enrollment Change Residual Amount	403,230	129,030	0	0
Plant Expansion	332,779	258,915	1,038,270	776,743
Appropriation Adjustment	1,500,000	0	0	0
Balance of Base Restoration	485,632	0	0	0
Degree Completion Incentive	0	106,631	0	0
Maintenance for Current Programs				
Personal Services 3% 0%*	1,462,857	0 *	1,506,744	0 *
Supplies & Expense 3% 0%*	439,383	0 *	452,564	0 *
Student Aid 3% 0%*	64,425	0 *	66,358	0 *
Quality Improvement				
Center for Applied Rsrch/Economic Dev	275,000	0	250,000	0
Manufacturing Technology Program	0	0	125,000	0
Accelerated Nursing Program	170,000	0	0	0
Total	7,194,806	2,335,576	3,438,936	776,743

CAPITAL BUDGET R&R AND TECHNOLOGY	Request	Commission for Higher Education Recommendation		
	2005-07	2005-06	2006-07	Total
General R&R	1,176,610	588,305	588,305	1,176,610
Infrastructure	762,428	381,214	381,214	762,428
Total	1,939,038	969,519	969,519	1,939,038

CAPITAL BUDGET FACILITIES	Request	Commission for Higher Education Recommendation	
	2005-07	2005-07	Comments
Bonding Authorization			
School of Business/General Classroom Building	33,800,000	6,616,509	\$2,046,069 A & E funding, \$2,710,377 Education Ctr Build Out, \$1,860,063 Physical Plant Expansion
Total	33,800,000	6,616,509	
Authority Only			
Recreation & Fitness Center Expansion - Phase II	7,250,000	7,250,000	
Total	7,250,000	7,250,000	

LINE ITEM INITIATIVES	Request	Commission for Higher Education Recommendation		
	2005-07	2005-06	2006-07	Total
Historic New Harmony	800,874	356,216	356,216	712,432
Lincoln Amphitheatre	629,807	238,562	238,562	477,124
Lincoln Amphitheatre Special Capital Appropriation	490,000	0	0	0
Total	1,920,681	594,778	594,778	1,189,556

0% increase recommended for 05-06 and 06-07

UNIVERSITY OF SOUTHERN INDIANA BOARD OF TRUSTEES CODE OF ETHICS

The conduct of University trustees should be characterized by integrity. Each individual's personal and professional conduct reflects on one's institution and the higher education enterprise at large.

The University of Southern Indiana Board of Trustees has chosen to voluntarily comply with the spirit of the Sarbanes-Oxley Act of 2002 and has developed the following Code of Ethics. USI embraces the values expressed in the Code and advocates their observance by the trustees, who should:

- Comply with applicable governmental laws, rules, and regulations;
- Act with competence and strive to advance competence, both in self and in others;
- Devote time, thought, and study to the duties and responsibilities of a trustee, and be able to render effective and creditable service;
- Understand the University's objectives and policies and contribute constructively to their ongoing evaluation and reformulation;
- Maintain the confidentiality of privileged information that infringes upon another's right to privacy and not disclose information to secure personal or financial gain;
- Complete the University's *Possible Conflict of Interest Disclosure Statement* to disclose any interest, financial or otherwise, direct or indirect, in any business, transaction, or professional activity which may be in substantial conflict with the proper discharge of a trustee's duties;
- Refuse to accept any gift, favor, service, or other item of significant value from any person, group, private business, or public agency which may affect the impartial performance of one's duties; and
- Refuse to engage in actions that violate the ethical principles contained in this Code or provisions of law.

Code violations should be reported and reviewed through the appropriate Board and administrative channels.

**Possible Conflict of Interest Disclosure Statements
filed for calendar year 2005**

University of Southern Indiana

DATE	NAME/ TITLE	VENDOR/ CONTRACTOR	DESCRIPTION OF FINANCIAL INTEREST
12-16-04	Janel S. Allen Assistant to the President	Safety Management Corporation The Box Center, Inc.	Spouse of owner Spouse of part-owner
12-15-04	Bruce H. Baker Trustee	N/A	N/A
12-21-04	Linda L. M. Bennett Provost and Vice President for Academic Affairs	N/A	N/A
12-16-04	Cynthia S. Brinker Vice President for Governmental Relations	N/A	N/A
12-15-04	Louise S. Bruce Trustee	N/A	N/A
01-04-05	Jerome R. Cain Dean of Pott School of Science and Engineering	N/A	N/A
12-14-04	Nadine A. Coudret Dean of School of Nursing and Health Professions	N/A	N/A
12-17-04	Mark A. Day Trustee	Anthem Blue Cross Blue Shield/ WellPoint, Inc.	Employee
12-20-04	John L. Deem Associate Vice President for Student Affairs	Fifth Third Bank Cabinets & Counters Keller Schroeder & Associates	Spouse of employee Father of employee Father of employee
12-06-04	Sandy K. Farmer Registrar	N/A	N/A
12-15-04	David M. Glassman Dean of School of Liberal Arts	N/A	N/A
12-21-04	Jon Mark Hall Director of Athletics	N/A	N/A
12-22-04	Charles F. Harrington Assistant Vice President for Academic Affairs	N/A	N/A
12-20-04	G. Patrick Hoehn Trustee	N/A	N/A

DATE	NAME/ TITLE	VENDOR/ CONTRACTOR	DESCRIPTION OF FINANCIAL INTEREST
12-15-04	H. Ray Hoops President	Integra Bank Corp. Deaconess Hospital, Inc. Deaconess Health System, Inc. WNIN Public Television	Director (compensated) Director Director Director
12-18-04	J. David Huber Trustee	N/A	N/A
12-16-04	Nils I. Johansen	Nils I. Johansen, P.E.	Owner
12-23-04	Marshall Edward Jones Associate Vice President for Academic Affairs and Director of Extended Services	N/A	N/A
12-16-04	Robert Eugene Klippel Dean of School of Business	N/A	N/A
12-16-04	Frank F. McDonald II Trustee	Integra Bank	Senior Vice President
12-21-04	Robert W. Parrent Vice President for Student Affairs	Fifth Third Bank	Spouse of Trust Department employee
12-22-04	C. Thomas Pickering Dean of Bower-Suhrheinrich School of Education and Human Services	N/A	N/A
12-15-04	Sherrienne M. Standley Vice President for Advancement	N/A	N/A
12-16-04	Harolyn G. Torain Trustee	N/A	N/A
01-04-05	Samuel J. Tucker Trustee	N/A	N/A
12-15-04	James L. Will Sr. Trustee	N/A	N/A

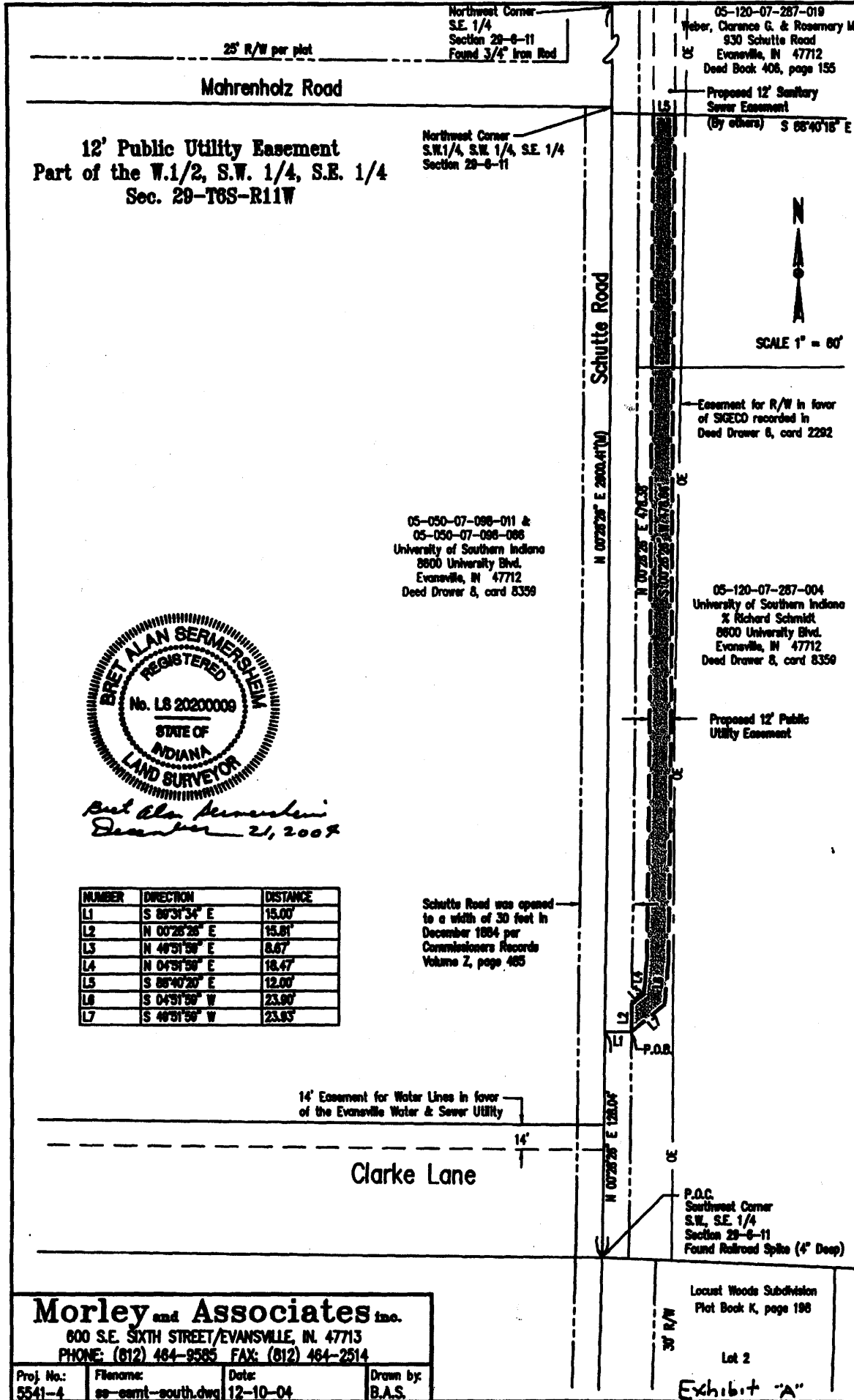
P U B L I C U T I L I T Y E A S E M E N T

THIS INDENTURE WITNESSETH, University of Southern Indiana, a body corporate and politic organized and existing under the laws of the State of Indiana (GRANTOR) of Vanderburgh County, State of Indiana, for and in consideration of the sum of ONE DOLLAR (\$1.00) and other valuable consideration, the receipt of which is hereby acknowledged, do hereby GRANT and CONVEY unto VANDERBURGH COUNTY, a governmental entity (GRANTEE), a nonexclusive easement and right-of-way to construct, install, operate, control, maintain, repair, reconstruct, or remove, one or more pipes, conduits, lines and all appurtenant and necessary structures to transmit public utilities across, under and upon the following described real estate located in Vanderburgh County, Indiana, to-wit:

Part of the West Half, Southwest Quarter, Southeast Quarter, Section 29, Township 6 South, Range 11 West in Perry Township, Vanderburgh County, Indiana, being more particularly described as follows:

Commencing at the Southwest corner of said quarter, quarter section; thence along the west line of said quarter section, North 00 degrees 28 minutes 26 seconds East 128.04 feet; thence South 89 degrees 31 minutes 34 seconds East 15.00 feet to the point of beginning; thence along the existing 30 foot Schutte Road right of way opened per Commissioner's Record Vol. Z, page 485, North 00 degrees 28 minutes 26 seconds East 15.81 feet; thence North 49 degrees 51 minutes 59 seconds East 8.67 feet; thence North 04 degrees 51 minutes 59 seconds East 18.47 feet; thence parallel with the west line of said quarter section, North 00 degrees 28 minutes 26 seconds East 478.38 feet to a point on the north line of a tract of land conveyed to the University of Southern Indiana, recorded in Deed Drawer 8, Card 8359 in the office of the Recorder of Vanderburgh County, Indiana; thence along said north line, South 88 degrees 40 minutes 20 seconds East 12.00 feet; thence parallel with the west line of said quarter section, South 00 degrees 28 minutes 26 seconds West 478.66 feet; thence South 04 degrees 51 minutes 59 seconds West 23.90 feet; thence South 49 degrees 51 minutes 59 seconds West 23.93 feet to the point of beginning, containing 6192 square feet (0.14 acres).

Subject to all easements, rights-of-way, building and use restrictions of record.



Bret Alan Sermersheim
 December 21, 2007

NUMBER	DIRECTION	DISTANCE
L1	S 89°31'34" E	15.00'
L2	N 07°28'28" E	15.81'
L3	N 49°31'58" E	8.67'
L4	N 04°31'58" E	18.47'
L5	S 88°40'20" E	12.00'
L6	S 04°31'58" W	23.90'
L7	S 49°31'58" W	23.93'

Schutte Road was opened
 to a width of 30 feet in
 December 1884 per
 Commissioners Records
 Volume 2, page 485

Morley and Associates Inc.
 800 S.E. SIXTH STREET/EVANSVILLE, IN. 47713
 PHONE: (812) 464-8585 FAX: (812) 464-2514

Proj. No.: 5541-4	Filename: ss-eamt-south.dwg	Date: 12-10-04	Drawn by: B.A.S.
----------------------	--------------------------------	-------------------	---------------------

Abstract
Site-Based Distance Learning Master of Social Work Degree Program
University of Southern Indiana

Objectives:

The overall objective is to develop, implement, and evaluate a site-based distance learning Master of Social Work Program offered through the University of Southern Indiana (USI). Indiana State University at Terre Haute requested to be an initial site for this program. The program will be offered in the Terre Haute area on a one-time basis, with evaluation to enhance the quality of the program for future offerings in Terre Haute and other possible locations.

Clientele To Be Served:

The clientele to be served will be students with Bachelor of Social Work (BSW) degrees who live within 35 miles of Terre Haute. Applicants must have BSW degrees from nationally accredited Bachelor of Social Work degree programs.

Curriculum:

Curriculum consists of the 36-hour Advanced Standing Program, which is the same curriculum offered on the USI campus. The curriculum will be offered over a two-year period on a part-time basis. Two courses will be taught each semester, including summer sessions. This will involve primarily a distance education delivery mode, with some face-to-face classroom meetings for each course.

Employment Opportunities:

According to Cathy Boatman of the Indiana Department of Workforce Development, the growth rate for social work positions in Terre Haute and the surrounding area is three times greater than for all occupations in the area.

Implementation Date:

Delivery of the program will begin in Terre Haute fall 2005.



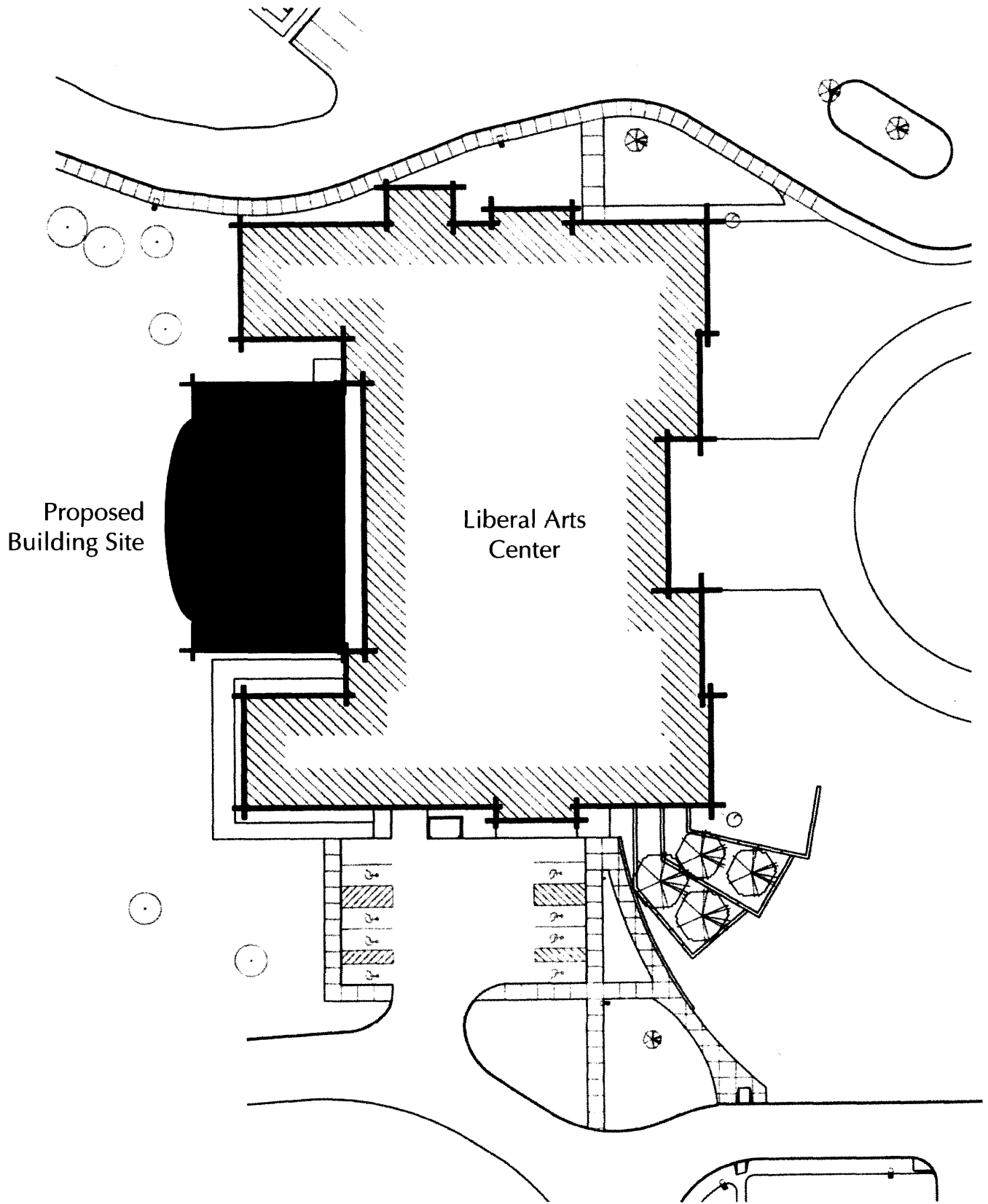
existing Liberal Arts Center



Liberal Arts Center with proposed McCutchan Art Gallery

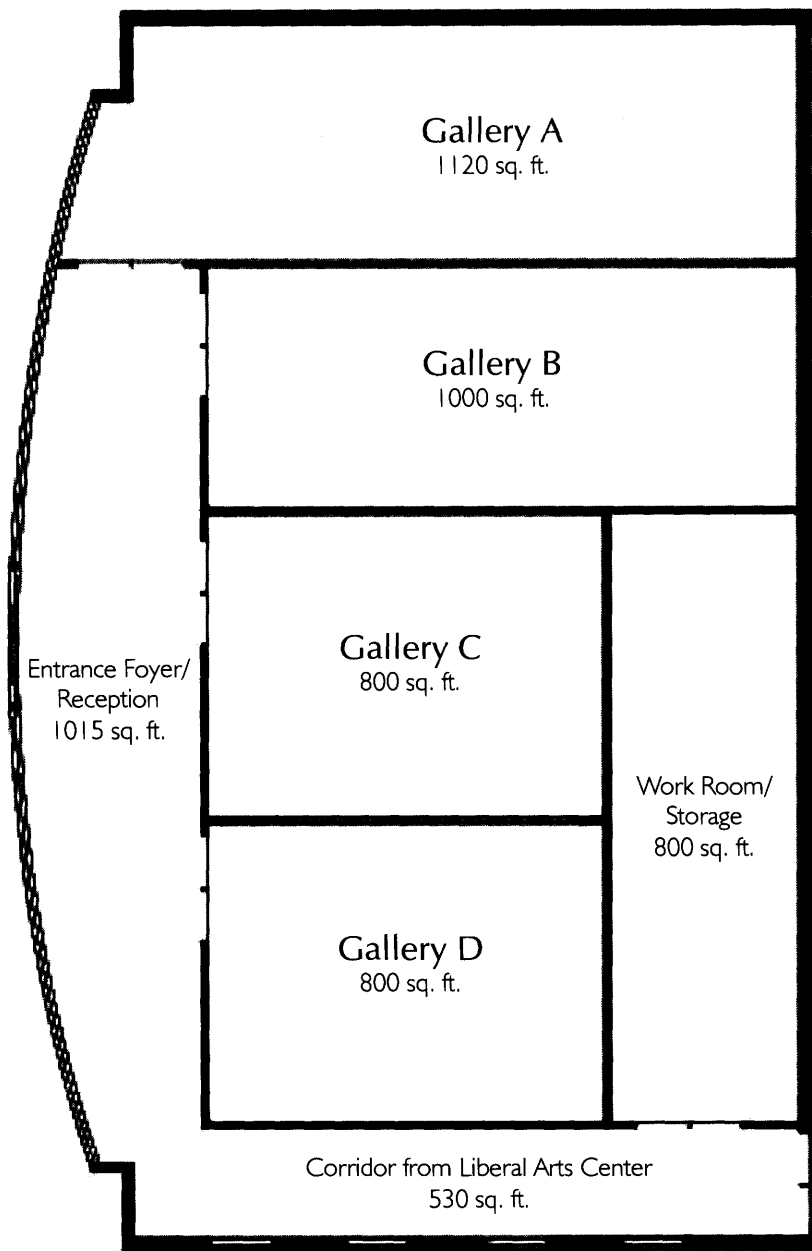
McCutchan Art Gallery
Conceptual plan for addition to
Liberal Arts Center





McCutchan Art Gallery
Conceptual plan for addition to
Liberal Arts Center





Schematic Plan

McCutchan Art Gallery
Conceptual plan for addition to
Liberal Arts Center

